

● ■ OISIDE

DESIGNED BY
OISIDE DESIGN STUDIO

GANDULA

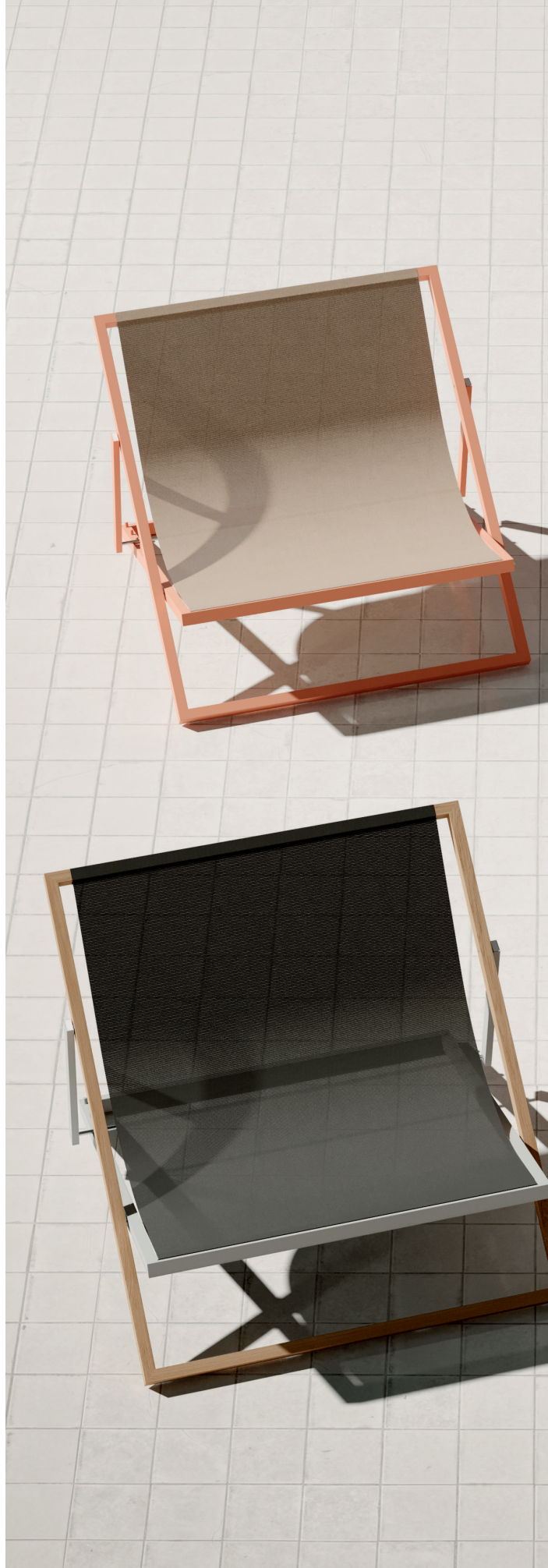
*An improved version
of the typical Mediterranean
deckchairs*



A more up-to-date and efficient version of the typical deckchairs that are commonly seen within the Mediterranean landscape, made from harder wearing materials and with an improved design.

The collection owes its name to the popular term in Spain for this type of seating, common around the Northern Mediterranean region, which literally means lazy or leisurely. Maintaining the **essence of the original traditional design** the gandulas by OISIDE include lightweight materials that are more resistant allowing them to be kept outdoors permanently.

The frames are available in **aluminium and iroko timber** or indeed a combination of both, while the **high-tech fabrics** used instead of canvas is a type of mesh meaning that they can breathe and avoids the 'sail effect' blow-out. The collection is completed with a side table and a support wall stand that allows for up to 4 deckchairs to be stored in a surprisingly small area.





With individual or double versions, the Gandular foldable deckchairs can be fixed in four different positions for the reclining headrest and also include a lock that prevents the frames from suddenly slamming shut.

Furniture for future.



The colours of the fabrics and the frames can be alternated with wood at certain points, and can be selected in any combination required. And OISIDE also allows customisation using other colours in addition to the ones offered.



Furniture for future.

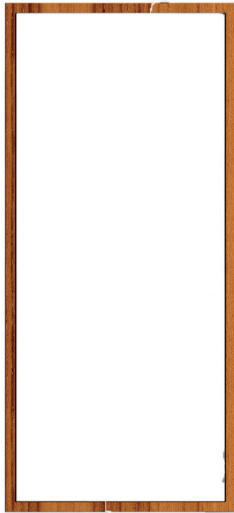




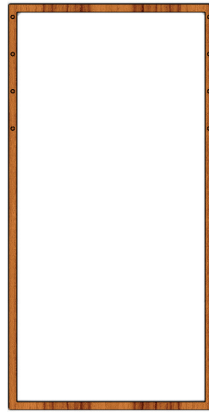
Furniture for future.

GANDULA COLLECTION	Reference	Description	Dimensions (piece / cm)	Weight (kg)	Pieces (/ Box)	Dimensions (Box / cm)	Volume (m ³)	Weight (kg)
	195100	Oi Gandula individual ALU+ALU	125 x 68 x 93	7	1	148 x 69 x 5	0,1	7
	195101	Oi Gandula individual IROKO+IROKO	125 x 68 x 93	6	1	148 x 69 x 5	0,1	6
	195102	Oi Gandula individual ALU+IROKO	125 x 68 x 93	5	1	148 x 69 x 5	0,1	5
	195200	Oi Gandula Doble ALU+ALU	125 x 113 x 93	13	1	148 x 114 x 5	0,2	13
	195201	Oi Gandula Doble IROKO+IROKO	125 x 113 x 93	12	1	148 x 114 x 5	0,2	12
	195202	Oi Gandula Doble ALU+IROKO	125 x 113 x 93	10	1	148 x 114 x 5	0,2	12
	195108	Soporte pared hamaca individual	53 x 30 x 4	1	1	60 x 40 x 5	0,1	1

IROKO WOOD



Main Frame



Secondary Frame

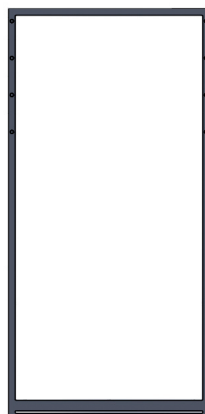


Arms Frame

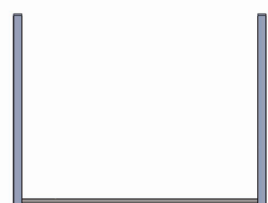
ALUMINUM



Main Frame



Secondary Frame



Arms Frame

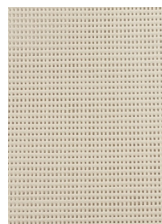
Frames can be combined to create the perfect GANDULA for every project.

Outdoor fabrics

Soltis



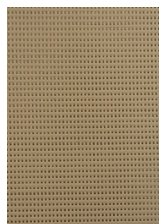
White
86_2044



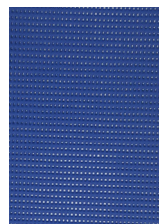
Champagne
86_2175



Beige
86_2135



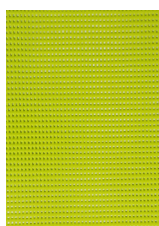
Brown
86_2012



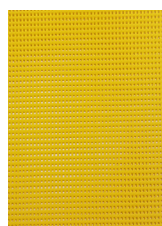
Blue
86_2161



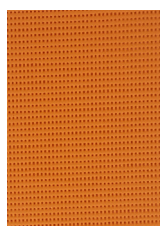
Green
86_2158



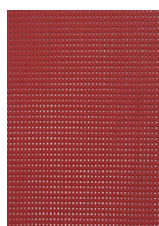
Lime
86_2157



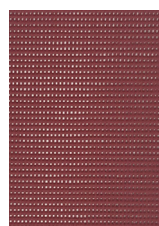
Yellow
86_2166



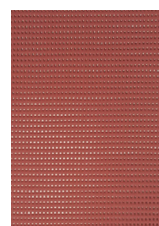
Orange
86_8204



Red
86_8255



Deep Red
85_51181



Terracotta
86_51180

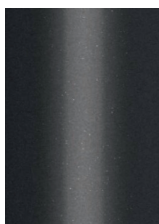
Technical File

características técnicas

	valor	normas
peso	380 g/m ²	EN ISO 2286-2
espesor	0.45 mm	
ancho	177 cm - 267 cm	
longitud estándar pieza	50 ml en laize de 177 cm / 40 ml en laize de 267 cm	
resistencia a la tracción (urdimbre/trama)	230/160 daN/ 5 cm	EN ISO 1421
resistencia al desgarro (urdimbre/trama)	45/20 daN	DIN 53.363
reacción al fuego	B-s ₂ ,d ₀ /EN 13501-1 M1/NFP 92-507 • B1/DIN 4102-1 • BS 7837 • BS 5867 • Schwerbrennbar Q1-Tr1 /ONORM A 3800-1 • Clase 1/UNI 9177-87 • M1/UNE 23.727-90 • VKF 5.3/SN 198898 • 1530.3/AS/NZS • G1/GOST 30244- 94 • Method 1/NFPA 701 • CSFM T19 • Class A/ASTM E84 • Group 1/AS/NZS 3837 • Class 1-EN 13773	
garantía	5 años	

Estructura

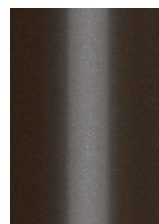
Aluminum



Graphite
RAL 7021



White
RAL 9003



Brown
RAL 8019



Beige
RAL 1013



Copper
RAL 8004



Green
RAL 6003



Beiger red
RAL 3012



Matt Black
RAL 9005



Gray-White
RAL 9002



Gray
RAL 7044



Blue
RAL 5003

Wood



Iroko wood



MORE ABOUT OISIDE DESIGN STUDIO

OISIDE develops its collections in collaboration with talented designers and architects, who count on the help of its own design team. Innovative designs both aesthetically and technically with a sophisticated and timeless appeal featuring ingenious detailing. It is this same team that carries out research into new systems and finishes to improve the resistance of the OISIDE materials and upholstery.



ABOUT OISIDE

OISIDE is a Spanish firm specialising in the design and manufacture of outdoor furniture for contract and residential projects. With more than 20 years experience behind it OISIDE is a company with a significant international presence working with architects and designers from around the world. The production of its collections is undertaken entirely in Spain through expert manufacturing of the highest quality that allows OISIDE to offer a great degree of customisation through its designs.